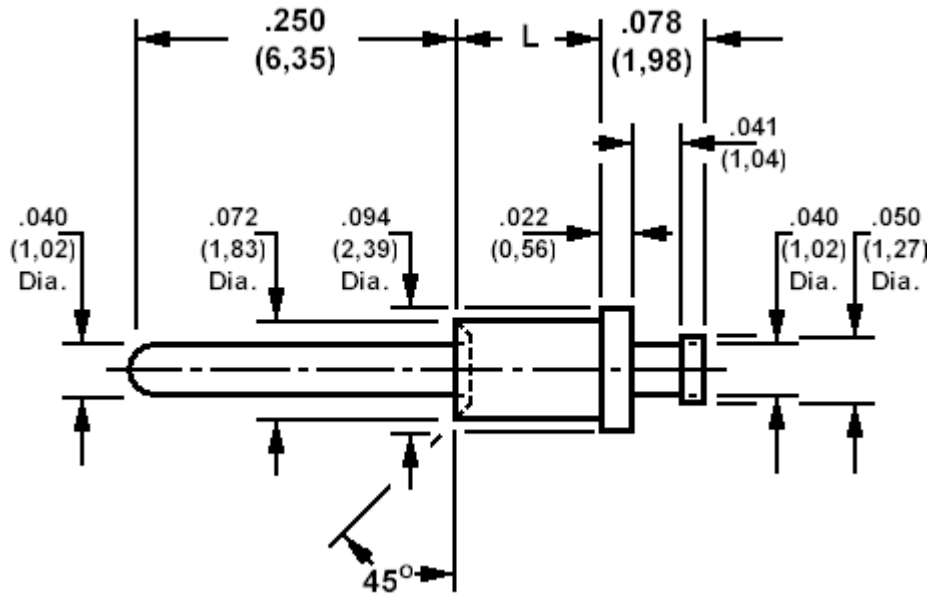


**120-1031 Solder Terminal, Pin Type**

Recommended mounting hole .076 (1,93), #48 drill



How to order code

**120-1031-XX-YY-00**

Basic Part No. XX = L dimension, YY = Plating Finish

DIMENSIONS (XX)			
Basic Part No		L	Board Thickness
120-1031	-01	.051 (1,30)	.031 (0,79)
	-02	.082 (2,08)	.062 (1,57)
	-03	.113 (2,87)	.094 (2,39)
	-04	.145 (3,68)	.125 (3,18)

MATERIALS			
Component	Material	Finish (YY)	
		-01	-04
Terminal	Brass	Silver	Electro Tin

SWAGE TOOLING	
Recommended Swaging Tools:-	
Anvil	435-6420-01-00-00
Roll punch	435-6626-01-00-00