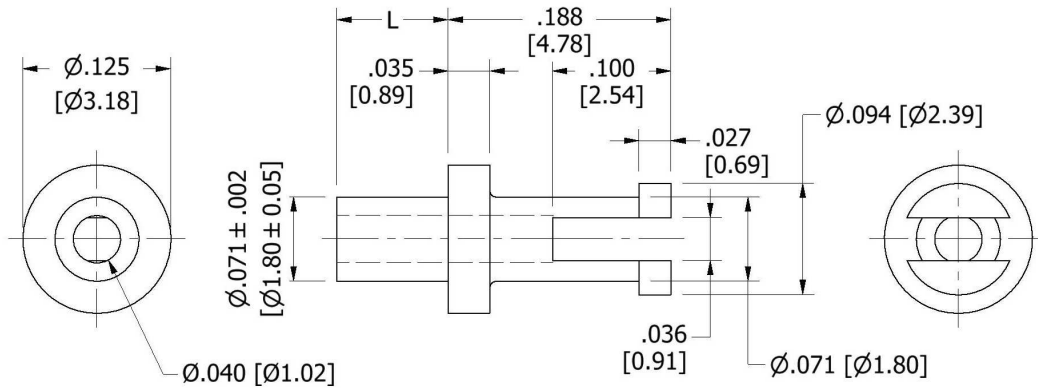


140-1028 Solder Terminal, Slotted

Recommended mounting hole .076 (1,93), #48 drill



How to order code

140-1028-XX-YY-00

Basic Part No XX = L dimension, YY = Plating Finish

DIMENSIONS (XX)			
Basic Part No	(XX)	L	Board Thickness
140-1028	-01	.063 (1,60)	.031 (0,79)
	-02	.094 (2,39)	.062 (1,57)
	-03	.125 (3,18)	.094 (2,39)
	-04	.156 (3,96)	.125 (3,18)

MATERIALS			
Component	Material	Finish (YY)	
		-01	-04
Terminal	Brass	Silver	Electro tin

SWAGE TOOLING	
Recommended Swaging Tools:-	
Anvil	435-6487-01-00-00
Roll punch	435-6617-01-00-00
Flare Punch	435-6657-01-00-00

Dimensions in inches [mm]

Tolerance unless otherwise stated $\pm .005$ [± 0.13]