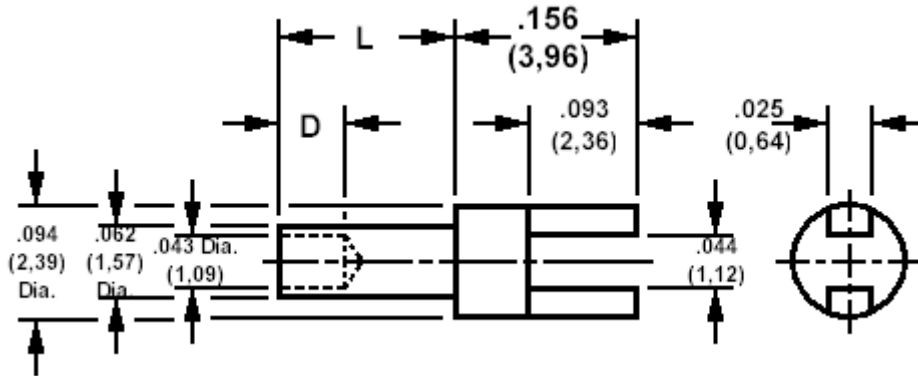


140-1385 Solder Terminal, Slotted

Recommended mounting hole .067 (1,70), #51 drill



How to order code

140-1385-XX-YY-00

Basic Part No XX = L dimension, YY = Plating Finish

DIMENSIONS (XX)				
Basic Part No		L	Board Thickness	D
140-1385	-11	.025 (0,64)	.016 (0,41)	.040 (1,02)
	-01	.045 (1,14)	.031 (0,79)	.040 (1,02)
	-02	.094 (2,39)	.062 (1,57)	.062 (1,57)
	-03	.125 (3,18)	.094 (2,39)	.062 (1,57)
	-04	.156 (3,96)	.125 (3,18)	.062 (1,57)

MATERIALS			
Component	Material	Finish (YY)	
		-01	-05
Terminal	Brass	Silver	Electro Solder

SWAGE TOOLING	
Recommended Swaging Tools:-	
Anvil	435-6412-01-00-00
Roll punch	435-6611-01-00-00
Flare Punch	435-6692-01-00-00 (for -02 through -04)
Flare Punch	435-6657-01-00-00 (for -11 and -01)