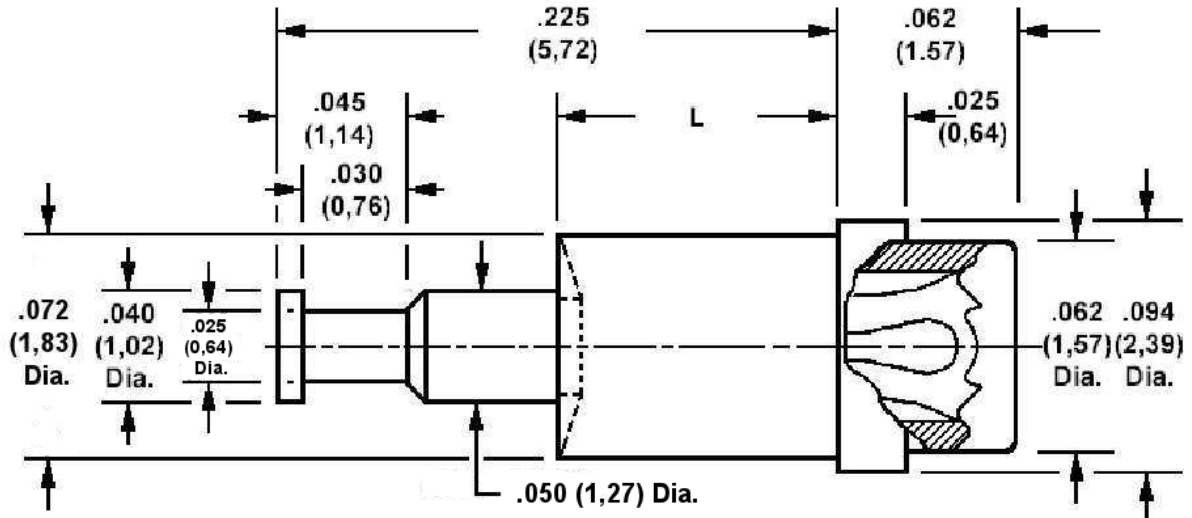


**450-3266 Swage Mount Socket,
 for .016 (0,41) to .020 (0,51) Diameter Pins**

Recommended mounting hole .076 (1,93) + .002 (0,05) - .001 (0,03)



Min hole depth .210 (5,33)

How to order code
450-3266-YY-XX-00
 Basic Part No XX = Finish

DIMENSIONS		
Dash No. (YY)	L	Board Thickness
-01	.041 (1,04)	.031 (0,79)
-02	.072 (1,83)	.061 (1,57)
-03	.104 (2,64)	.094 (2,39)
-04	.135 (3,43)	.125 (3,18)

MATERIALS				
Component	Material	Finish (-03)	Finish (-04)	Finish (-06)
Body	Brass	Gold over Nickel	Electro Tin	Electro Tin
Spring	Beryllium copper	Gold over Nickel	Electro Tin	Gold over Nickel

TOOLING	
Anvil	435-6411-01-00-00
Roll Punch	435-6618-01-00-00