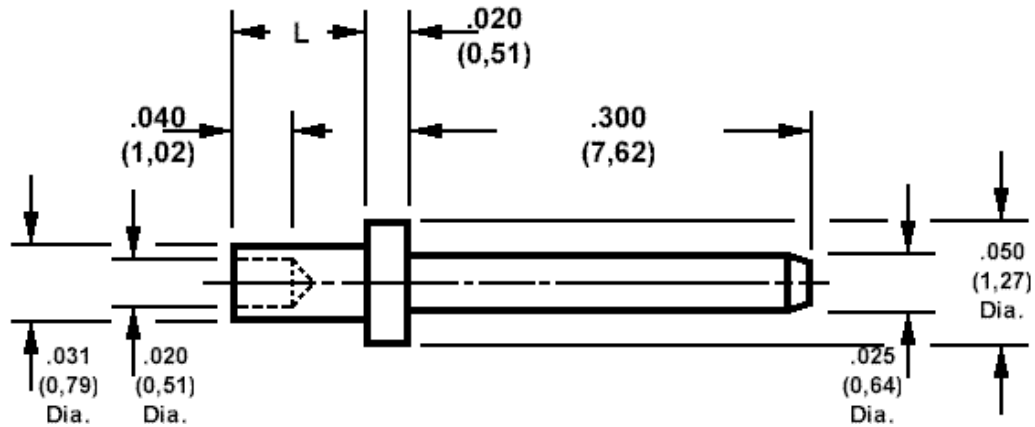


**460-2621 Swage Mount, .025 (0,64) Diameter Pin**

Recommended mounting hole .035 (0,89) ± .002 (0,05), #65 drill



How to order code  
**460-2621-XX-YY-00**

Basic Part No XX= L dimension, YY = Plating Finish

DIMENSIONS (XX)			
Basic Part Number	(XX)	L	For Board Thickness
460-2621	-01	.051 (1,30)	.031 (0,79)
	-02	.082 (2,08)	.062 (1,57)

MATERIALS			
Component	Material	Finish (-03)	Finish (-04)
Pin	Brass	Gold over Nickel	Electro Tin

SWAGE TOOLING	
<b>Recommended Swaging Tools:-</b>	
Anvil	435-6522-01-00-00
Flare Punch	435-6657-01-00-00