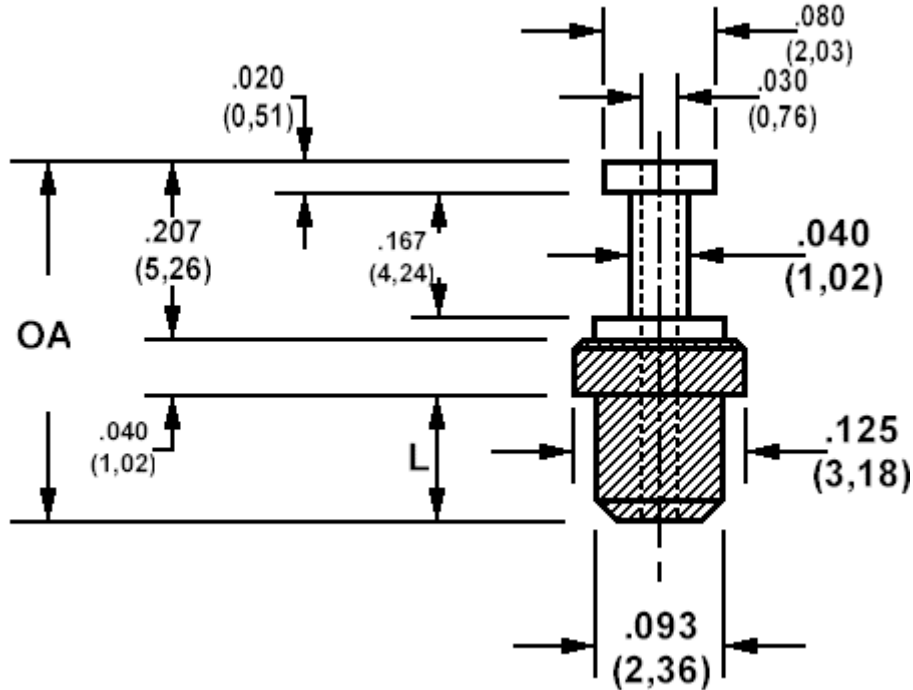


## 571-4153, Insulated solder terminal, Turreted, Feed thru, .083 (2,11) mounting hole



**How to order code**  
**571-4153-XX-YY-19**

Basic Part No (XX = Panel thickness, YY = plating finish. See tables for options)

Basic Part No.		OA(ref)	L	Panel Thickness (XX)
571-4153	-01	.307 (7,80)	.060 (1,52)	.016 (0,40) only
	-02	.347 (8,81)	.100 (2,54)	.031 (0,79) to .062 (1,59)

Component	Material	Finish (YY)	
Terminal	Brass	-01	-05
Insulator	Teflon - white	Silver	Electro Solder

Additional Specifications	Panel thickness	
	-01	-02
Flashover VRMS at Sea Level	2000	1500
Capacitance (pF)	0.5	0.6

Mechanical tolerance unless otherwise stated  $\pm 0.005(0,13)$

Teflon is a registered trademark of Dupont